

“For every day use”



Products for the modern laundry room
and workplace. Made in Sweden.

NIMO

"As good as new, every day"

Our manufacturing takes place in Sweden, and for over 50 years we've been producing the products you need to take care of your clothes so that they last longer.

Here we have gathered our products so you easily can compare and choose from the market's widest range of laundry sinks and energy-efficient drying cabinets for both home and professional environments.

Table of contents

Drying cabinets.....	5
Laundry benches.....	16
Laundry sinks.....	20
Mangle.....	23
Other products.....	24
Article information.....	30



For every day use.

There are many ways to dry wet clothes, but only one product that dries everything. A product that dries both gently and energy-efficiently, whether it's your most delicate garments or your

children's wet overalls. A product with heat pump technology or air vent technology that is sensor- or timer-controlled. Of course, we're talking about a drying cabinet!

Our most common drying cabinets are designed based on three different concepts.



Bas

The perfect drying cabinet for families with children.



Extreme

Customized for schools and ski lodges.



Bod

The optimal drying cabinet for the workplace.

! More information about the products can be found further back in the catalog. Refer to the table of contents for the exact chapter.

The specified values for the drying cabinets apply to 4 kg of spun laundry and optimal conditions according to the Swedish National Board of Housing, Building, and Planning's guidelines for laundry room ventilation. Ambient temperature, humidity, room air circulation, and spin speed during centrifugation are factors that can contribute to variations in the specified values.

Drying cabinet | Easy Dryer | Stepless Temperature Control

Tall floor-standing model with up to three rows of foldable and extendable hangers depending on the chosen model. The cabinet is easily controlled with two knobs for stepless temperature and time regulation. It comes with ventilation connections and adjustable feet to ensure proper stability of the cabinet.



Colors	White, Titanium, Black	Height	1 700–1 900 mm	Depth	610 mm
Door hanging	Right or left	Width	595 mm	Weight	56–60 kg

- ✓ 6 kg drying capacity
- ✓ Robust construction
- ✓ Sturdy extendable foldable hangers
- ✓ Up to 16 meters of hanging length
- ✓ Produced from recyclable materials
- ✓ Stepless temperature control

Interior	Bas	Bod	Extrem
Number of extendable hangers	3	-	2
Hanging length (m)	16	-	11
Number of door hangers	3	3	-
Number of glove hangers	-	-	2
Number of ceiling hooks	-	6	6
Number of shoe racks	-	-	-

Technical data

Drying system	Extract air	Energy consumption at full load (4 kg) with 50 % residual moisture	2,56 kWh
Number of programs	-	Drying time at full load (4 kg) with 50 % residual moisture	90 min
Noise level	55 dB (A)	Overheating protection	Yes
Drying sensor	No	Performance at full load	25 g/min
Control panel	Knob	Capacity	4 kg dry laundry
Program control	Timer	Airflow	184 m³/h
Energy consumption /kg of cotton, with 50 % residual moisture	0,69 kWh		

Drying cabinet | Sensor Dryer | Sensor technology

The market's fastest drying cabinet gently dries your clothes, minimizes wear and dries garments that don't require washing. With sensor technology and the unique ECO+ program, you can save up to 85 % energy compared to traditional drying cabinets. The built-in sensor shuts off the drying process when the clothes are dry. In addition to automatic programs, there is also the option to control the drying manually.



Colors	White, Titanium, Black	Height	1 700–1 900 mm	Depth	610 mm
Door hanging	Right or left	Width	595 mm	Weight	56–60 kg

- ✓ 6 kg drying capacity
- ✓ 6 automatic programs
- ✓ Sturdy extendable foldable hangers
- ✓ Up to 16 meters of hanging length
- ✓ Produced from recyclable materials
- ✓ Robust construction

Interior	Bas	Bod	Extrem
Number of extendable hangers	3	-	2
Hanging length (m)	16	-	11
Number of door hangers	3	3	-
Number of glove hangers	-	-	2
Number of ceiling hooks	-	6	6
Number of shoe racks	-	-	-

Technical data

Drying system	Extract air	Energy consumption at full load (4 kg) with 50 % residual moisture	2,56 kWh
Number of programs	6	Drying time at full load (4 kg) with 50 % residual moisture	85 min
Noise level	55 dB (A)	Overheating protection	Yes
Drying sensor	Sensor	Performance at full load	25 g/min
Control panel	Digital	Capacity	4 kg dry laundry
Program control	Electronic	Airflow	184 m³/h
Energy consumption /kg of cotton, with 50 % residual moisture	0,64 kWh		

Drying cabinet | ECO Dryer 2.0 | Energy-efficient system

The market's most energy-efficient drying cabinet. It consumes up to 65 % less energy compared to a traditional drying cabinet with air vent technology. The drying cabinet dehumidifies textiles using heat pump technology in a closed system, meaning you don't need to connect the cabinet to exhaust ventilation or drainage. The cabinet can be ordered with three different interiors. Glove hangers and shoe racks are included in all models.



Colors	White, Titanium, Black	Height	1 930 mm	Depth	675 mm
Door hanging	Right or left	Width	595 mm	Weight	95 kg

- ✓ 4 kg drying capacity
- ✓ 2 fully automatic programs
- ✓ Energy-efficient heat pump technology
- ✓ Does not require exhaust ventilation
- ✓ Quiet operation
- ✓ Touch panel

Interior	Bas	Bod	Extrem
Number of extendable hangers	3	-	2
Hanging length (m)	16	-	11
Number of door hangers	-	-	-
Number of glove hangers	2	2	2
Number of ceiling hooks	-	6	6
Number of shoe racks	1	1	1
Condensate water tank	Yes	-	Yes

Technical data

Drying system	Heatpump	Energy consumption at full load (4 kg) with 50 % residual moisture	1,3 kWh
Number of programs	2	Drying time at full load (4 kg) with 50 % residual moisture	90 min
Noise level	52 dB (A)	Overheating protection	Yes
Drying sensor	Sensor	Performance at full load	22 g/min
Control panel	Touch	Capacity	4 kg dry laundry
Program control	Electronic	Airflow	-
Energy consumption /kg of cotton, with 50 % residual moisture	0,32 kWh		



Drying cabinet | DC 120 V | Energy-efficient with air vent technology

Energy-efficient and efficient drying cabinet with air vent technology, providing unusually good economy combined with very high capacity and easy installation. The cabinet also features built-in lighting that provides good working illumination over the 20 swing-out hangers made of stainless steel.



Colors	White	Height	1 860 mm	Depth	650 mm
Door hanging	Double door	Width	1 200 mm	Weight	145 kg

- ✓ 6–8 kg drying capacity
- ✓ Built-in lighting
- ✓ Sturdy swing-out hangers
- ✓ Up to 18 meters of hanging length
- ✓ Robust construction

Interior	Bas
Number of extendable hangers	20
Hanging length (m)	18
Number of door hangers	-
Number of glove hangers	Selectable
Number of ceiling hooks	-
Number of shoe racks	Selectable

Technical data

Drying system	Extract air	Energy consumption at full load (6,5 kg) with 50 % residual moisture	4,2 kWh
Number of programs	2	Drying time at full load (6,5 kg) with 50 % residual moisture	55 min
Noise level	57 dB (A)	Overheating protection	Yes
Drying sensor	Sensor	Performance at full load	72 g/min
Control panel	Touch	Capacity	4 kg dry laundry
Program control	Electronic	Airflow	250 m ³ /h
Energy consumption /kg of cotton, with 50 % residual moisture	0,70 kWh	Power consumption	6,2 kW

Drying cabinet | DC 120 HP | Top- and bottom unit

DC 120 HP is our most energy-efficient and effective drying cabinet with heat pump technology, providing unusually good economy combined with very high capacity and easy installation. The built-in lighting provides good working illumination over the 20 swing-out hangers. The heat pump and all electronics are located at the top, making servicing easier.



Colors	White	Height	2 059 mm	Depth	658 mm
Door hanging	Double door	Width	1 195 mm	Weight	82–189 kg

- ✓ Built-in lighting
- ✓ Robust construction
- ✓ Sturdy swing-out hangers
- ✓ Up to 18 meters of hanging length
- ✓ Automatic moisture sensing
- ✓ Does not require exhaust ventilation

Interior	Bas
Number of extendable hangers	20
Hanging length (m)	18
Number of door hangers	-
Number of glove hangers	Selectable
Number of ceiling hooks	-
Number of shoe racks	Selectable

Technical data

Drying system	Heatpump	Energy consumption at full load (6 kg) with 50 % residual moisture	2,1 kWh
Number of programs	2	Drying time at full load (6 kg) with 50 % residual moisture	60 min
Noise level	55 dB (A)	Overheating protection	Yes
Drying sensor	Sensor	Performance at full load	50 g/min
Control panel	Touch	Capacity	4 kg dry laundry
Program control	Electronic	Airflow	-
Energy consumption /kg of cotton, with 50 % residual moisture	0,35 kWh	Power consumption	2,3 kW

Drying cabinet | ETS 1100 | Narrow cabinet for small spaces

Compact and flexible drying cabinet with timer-controlled fan, stepless heat, and reversible door. A convenient drying cabinet designed for wall mounting in the bathroom or in a smaller laundry room. The drying cabinet is equipped with two switches for setting three different power levels and a timer knob with a maximum of 4 hours.



Colors	White	Height	1 140 mm	Depth	336 mm
Door hanging	Reversible	Width	595 mm	Weight	33 kg

- ✓ Simple and neat drying cabinet
- ✓ Flexible design
- ✓ Stepless temperature control
- ✓ Timer-controlled fan
- ✓ 2 kg drying capacity
- ✓ Robust construction

Interior	Bas
Number of extendable hangers	-
Hanging length (m)	5
Number of door hangers	2
Number of glove hangers	-
Number of ceiling hooks	-
Number of shoe racks	-

Technical data

Drying system	Extract air	Energy consumption at 550 W	1,7 kWh
Number of programs	-	Drying time at full load (1,3 kg) with 50 % residual moisture	75 min
Noise level	60 dB (A)	Overheating protection	Yes
Drying sensor	-	Performance at full load	-
Control panel	Knob	Capacity	1,3 kg dry laundry
Program control	Timer	Airflow	150 m ³ /h
Energy consumption /kg of cotton, with 50 % residual moisture	-		



Drying cabinet | ETS 1500 | Wall-mounted drying cabinet

Compact and flexible drying cabinet with timer-controlled fan, reversible door, and retractable hanger system that provides a comfortable working height. A convenient drying cabinet designed for wall mounting in the bathroom or in a smaller laundry room.



Colors	White	Height	1 435 mm	Depth	610 mm
Door hanging	Reversible	Width	595 mm	Weight	60 kg

- ✓ Simple and neat drying cabinet
- ✓ Reversible door
- ✓ Stepless heat regulation
- ✓ Timer-controlled fan
- ✓ 4 kg drying capacity
- ✓ Robust construction

Interior	Bas
Number of extendable hangers	3
Hanging length (m)	16
Number of door hangers	-
Number of glove hangers	-
Number of ceiling hooks	-
Number of shoe racks	-

Technical data

Drying system	Extract air	Energy consumption at full load (3,5 kg) with 50 % residual moisture	1,4 kWh
Number of programs	0	Drying time at full load (3,5 kg) with 50 % residual moisture	120 min
Noise level	60 dB (A)	Overheating protection	Yes
Drying sensor	No	Performance at full load	-
Control panel	Knob	Capacity	3,5 kg dry laundry
Program control	Manual	Airflow	180 m ³ /h

Drying cabinet | ETS 1500E | Wall-mounted drying cabinet

Wall-mounted drying cabinet for smaller spaces, suitable, for example, above the washing machine. A retractable hanger system provides a comfortable working height. Sensor-controlled system that optimizes drying and energy consumption.



Colors	White	Height	1 435 mm	Depth	610 mm
Door hanging	Reversible	Width	595 mm	Weight	60 kg

- ✓ Simple and neat drying cabinet
- ✓ Reversible door
- ✓ Low energy consumption
- ✓ Sensor system
- ✓ 4 kg drying capacity
- ✓ Robust construction

Interior	Bas
Number of extendable hangers	3
Hanging length (m)	16
Number of door hangers	-
Number of glove hangers	-
Number of ceiling hooks	-
Number of shoe racks	-

Technical data

Drying system	Extract air	Energy consumption at full load (3,5 kg) with 50 % residual moisture	0,4 kWh
Number of programs	2	Drying time at full load (3,5 kg) with 50 % residual moisture	120 min
Noise level	60 dB (A)	Overheating protection	Yes
Drying sensor	Yes	Performance at full load	17 g/min
Control panel	Digital	Capacity	3,5 kg dry laundry
Program control	Electronic	Airflow	180 m ³ /h



Make the laundry room stylish & functional.

There are large, small, and in-between sizes. Fully enclosed, half enclosed, and open. White, black, and titanium. The laundry benches come in flexible modular units, allowing you to customize and combine freely according to your desires and needs – choose

based on the space you have at home. But no matter what you choose, you always get a laundry bench with adjustable feet, a laundry tub with a rounded bottom surrounded by stainless steel surfaces with a spill rim. All our laundry benches come with a drainage kit.

! More information about the products can be found further back in the catalog. Refer to the table of contents for the exact chapter.

Laundry bench | TB 500 | Compact laundry bench

Build the laundry room of the future with NIMO's flexible laundry benches – all with fully integrated plinth, door dampers, child locks, and adjustable feet. Our laundry benches are completely free from fiber-based board materials that can warp or crack in damp environments. Can be ordered with or without a countertop.



- ✓ Adjustable feet
- ✓ Convenient storage
- ✓ Flexible door hanging
- ✓ Available in three colors

Color	White, Titanium, Black	Width	500 mm
Sink placement	Centered	Depth	600 mm
Height	900 mm	Weight	21–24 kg*

Technical data

Laundry sink placement	Centered
Laundry sink length	370 mm
Laundry sink width	340 mm
Laundry sink depth	160 mm

*Depending on the chosen configuration, with or without a countertop.

Laundry bench | TB 800 | Compact laundry bench with workspace

The laundry bench has three narrow shelves and double storage compartments in the door. It can also be ordered in a half-open version (TB 800 HT). Our laundry benches are completely free from fiber-based board materials that can warp or crack in damp environments. Can be ordered with or without a countertop.



- ✓ Adjustable feet
- ✓ Flexible door hanging
- ✓ Large workspace area
- ✓ Available in three colors

Color	White, Titanium, Black	Width	800 mm
Sink placement	Right/left	Depth	600 mm
Height	900 mm	Weight	32–38 kg*

Technical data

Laundry sink placement	Flexible
Laundry sink length	340 mm
Laundry sink width	370 mm
Laundry sink depth	160 mm

*Depending on the chosen configuration, with or without a countertop.

Laundry bench | TB 1000 | Spacious laundry bench with a single workspace

The laundry bench has double storage compartments with flexible placement in the door. It can also be ordered in a half-open version (TB 1000 HT). Our laundry benches are completely free from fiber-based board materials that can warp or crack in damp environments. Can be ordered with or without a countertop.



- ✓ Adjustable feet
- ✓ Flexible door hanging
- ✓ 3 wire baskets
- ✓ Available in three colors

Color	White, Titanium, Black	Width	1 000 mm
Sink placement	Right/left	Depth	600 mm
Height	900 mm	Weight	37–44 kg*

*Depending on the chosen configuration, with or without a countertop.

Technical data

Laundry sink placement	Flexible
Laundry sink length	340 mm
Laundry sink width	370 mm
Laundry sink depth	160 mm

Laundry bench | TB 1800 | Our most spacious laundry bench

Semi-open laundry bench with one door, double storage compartments, hidden hinges, and space for a washing machine and dryer. Our laundry benches are completely free from fiber-based board materials that can warp or crack in damp environments. Can be ordered with or without a countertop.



- ✓ Adjustable feet
- ✓ Space for washing machine and dryer
- ✓ Flexible door hanging
- ✓ Double storage compartments in door

Color	White	Width	1 800 mm
Sinkplacement	Right/left	Depth	600 mm
Height	900 mm	Weight	32–38 kg*

*Depending on the chosen configuration, with or without a countertop.

Technical data

Laundry sink placement	Flexible
Laundry sink length	340 mm
Laundry sink width	370 mm
Laundry sink depth	160 mm

Laundry bench | TB 1200 | Flexible laundry bench with large workspace areas

Laundry bench with multiple applications, spacious work surface, the possibility of accommodating a washing machine, and available in various designs. Our laundry benches are completely free from fiber-based board materials that can warp or crack in damp environments. Can be ordered with or without a countertop.



- ✓ Flexible laundry bench
- ✓ Adjustable feet
- ✓ Child lock
- ✓ Available in 8 variations

Color	White, Titanium, Black	Width	1 200 mm
Sink placement	Right/left	Depth	600 mm
Height	900 mm	Weight	34–55 kg*

*Depending on the chosen configuration, with or without a countertop.

Technical data

Laundry sink placement	Flexible
Laundry sink length	340 mm
Laundry sink width	370 mm
Laundry sink depth	160 mm





Time for a new laundry sink?

Make heavy laundry a smooth and easy task. We offer sinks in various sizes; choose whether you want to build it in, have it on a convenient stand or mount it directly on the wall. Our sinks are manufactured with high-quality materials,

making them both sturdy and durable. Additionally, they are easy to clean, ensuring it's effortless to keep them fresh and clean after each use. Let the laundry sink become an invaluable tool for your home!

! More information about the products can be found further back in the catalog. Refer to the table of contents for the exact chapter.

Laundry sink | TL 40-60 | Wall-mounted laundry sink

Our TL laundry sink is available in three models. TL 40, which holds 22 liters. TL 50, which holds 34 liters, and the largest model, TL 60, which holds 47 liters.

- ✓ Designed for wall mounting
- ✓ Robust in stainless steel
- ✓ Available in three sizes



Technical data	TL 40	TL 50	TL 60
Length	485 mm	555 mm	655 mm
Width	385 mm	455 mm	505 mm
Depth	190 mm	230 mm	250 mm
Weight	3,2 kg	4 kg	6 kg
Volume of the sink	22 l	34 l	47 l

Laundry sink | TL 40-60 INBYGG | Laundry sink for recessing

A stainless steel laundry sink for undermount installation in a countertop. Our built-in laundry sink comes with brackets, plug and chain, overflow drain, and a 1.1/4" valve. TL 40 Inbygg is suitable for installation in all of our laundry sinks.

- ✓ Designed for recessed installation
- ✓ Robust in stainless steel
- ✓ Available in three sizes



Technical data	TL 40 Inbygg	TL 50 Inbygg	TL 60 Inbygg
Length	485 mm	555 mm	660 mm
Width	385 mm	455 mm	510 mm
Depth	190 mm	230 mm	250 mm
Weight	3,2 kg	4 kg	6 kg
Volume of the sink	22 l	34 l	47 l

Laundry sink | TL 60 B | Sturdy laundry sink with floor stand

Our deep-drawn stainless steel laundry sink with an integrated molded washboard. The laundry sink has a capacity of 47 liters and comes with a galvanized steel floor stand, wall securing bracket, and an R32 drainage valve.

- ✓ Molded washboard
- ✓ Sturdy in stainless steel plate
- ✓ Electro-galvanized floor stand



Technical data	TL 60 B
Height	900 mm (incl. floor stand)
Length	655 mm
Width	505 mm
Depth	250 mm
Weight	7 kg
Volume of the sink	47 l



No more wrinkled sheets.

Carpet laundry sink | 105-220 L | Spacious carpet laundry sink

Our carpet laundry sink is available in two spacious models equipped with a washboard for easy and effective carpet washing. Carpet sink 105 L holds 105 liters and Carpet sink 220 L holds 220 liters. It comes with a stainless steel scrubbing board and an R32 drainage valve.

- ✓ Spacious sink in a compact format
- ✓ Robust construction
- ✓ Available in two sizes



Technical data	105 L	220 L
Length	900 mm	900 mm
Width	560 mm	650 mm
Depth	300 mm	475 mm
Weight	23 kg	36 kg
Volume of the sink	105 l	220 l

Mangle | KM 80 | Reliable cold ironing machine

A mangle with a convenient control gate that operates the 80 cm wide aluminum rolls and gathers the laundry in a convenient collection compartment under the foldable worktable. The mangle also features automatic shut-off.



- ✓ Reliable and easy to use
- ✓ Controlled with the control gate

Technical data	
Color	White
Height	1 060 mm
Width	970 mm
Depth	860 mm
Weight	100 kg

! More information about the products can be found further back in the catalog. Refer to the table of contents for the exact chapter.



Drying room dehumidifier | Contra 1200 | Keeps the air moisture-free.

Swedish quality product, constructed from high-grade materials, capable of drying a regular laundry load in about 2 hours thanks to efficient air treatment technology. Low energy consumption with 75 % less energy compared to an electric heater, and 85 % less than a hot water radiator. Keeps the drying room up to 10 m² dry, comfortably warm, and free from mold.



- ✓ Low energy consumption
- ✓ Swedish quality product made from high-quality materials
- ✓ High-quality corrosion protection for long lifespan
- ✓ Keeps the drying room dry and free from mold

Technical data

Height	700 mm
Width	580 mm
Depth	410 mm
Weight	65 kg

Drying room dehumidifier | Contra 2000 | Keeps the air moisture-free

The Contra drying room dehumidifier dries the clothes and keeps the air in the drying room fresh and moisture-free. The drying method makes the laundry feel as if it's drying outdoors. It has low energy consumption, 75 % lower than an electric heater, and 85 % lower than a hot water radiator. It keeps drying rooms of 10–30m² dry, comfortably warm, and free from mold.



- ✓ Low energy consumption
- ✓ Swedish quality product made from high-quality materials
- ✓ High-quality corrosion protection for long lifespan
- ✓ Keeps the drying room dry and free from mold

Technical data

Height	700 mm
Width	580 mm
Depth	410 mm
Weight	60 kg

Smart complements.

Enhance your NIMO product with our practical accessory solutions for increased convenience and efficiency in the drying cabinet or drying room.

Smart accessories that are easy to use, simple to clean, and always ready to be used - accessories for everyday use.

! More information about the products can be found further back in the catalog. Refer to the table of contents for the exact chapter.

Circulation fan | Complements | Maximize the benefits of Contra



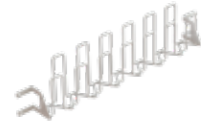
- ✓ Optimizes the drying process
- ✓ Distributes heat within the room

Hygrostat | Complements | Adjust the operation to your drying needs



- ✓ Controlled based on relative humidity
- ✓ Limits unnecessary operation

Glove hanger | White | Furnish your drying cabinet



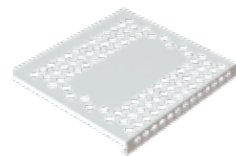
- ✓ Practical design that keeps gloves in place
- ✓ Easy installation inside the drying cabinet
- ✓ Space for up to 13 gloves

Door hanger | White | Furnish your drying cabinet



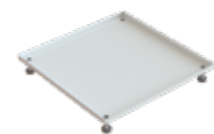
- ✓ Sleek design
- ✓ Easy installation inside the drying cabinet
- ✓ Helps you stay organized

Shoe rack | Shoe rack for ECO Dryer 2.0



- ✓ Sleek design
- ✓ Easy installation inside the drying cabinet

Shoe rack | Shoe rack for ECO Dryer 2.0 Bod



- ✓ Easy installation inside the drying cabinet
- ✓ Easy to keep clean

Lintdrawer | 24, 42, 80 L | Efficient for collecting washing machine lint



Technical data	24 L	42 L	80 L
Length	610 mm	820 mm	820 mm
Width	250 mm	340 mm	420 mm
Depth	185 mm	197 mm	250 mm
Weight	5 kg	8 kg	9,5 kg

Door TB | Fits NIMO laundry benches | Furnish your laundry room



- ✓ Available in white, titanium, and black
- ✓ Available for both right and left hanging
- ✓ Child lock

Plinth | High & Low | White plinth for washing machine



Technical data	High	Low
✓ Sleek design		
✓ Elevated for easy cleaning		
✓ Galvanized and powder-coated		
Height	295 mm	200 mm
Width	496 mm	496 mm
Depth	596 mm	596 mm

Washline | 5 meters | Furnish your laundry room



- ✓ Simple wall mounting
- ✓ Adjustable sections
- ✓ Long-lasting durability

Collection tray | For Easy- and Sensor dryer



- ✓ Facilitates cleaning
- ✓ Easy installation inside the drying cabinet
- ✓ Made of plastic/soft plastic

TB bench top | Countertop with washbasin | Fits our laundry benches



- ✓ Multiple sizes
- ✓ Easy installation
- ✓ Made of stainless steel

Technical data

Height	30 mm	Length of washbasin	340 mm
Width	500-1 800 mm	Width of washbasin	370 mm
Depth	600 mm	Depth of washbasin	160 mm

School kit | DC 120 | Functional interior for 120 cm drying cabinet



- ✓ Perforated shoe rack for easier cleaning
- ✓ 6 sets of glove hangers
- ✓ Easy installation

Drain kit, LB | KPL TB | Complete for laundry bench



- ✓ P-trap
- ✓ Complete kit for your laundry sink
- ✓ Easy installation

Rails | 1 pair of rails | Fits with Laundry bench TB



- ✓ Available in black, white, and silver
- ✓ Easy installation
- ✓ Sold separately from the wire baskets

Wire basket | Two sizes and colors | Fits with Laundry bench TB



- ✓ Available in black and silver
- ✓ Classic wire baskets
- ✓ Provides a quick overview of the contents

Technical data

Height	175 mm
Width	336*-436 mm
Depth	494 mm

*336 mm only fits TB 1200 T and TB 1200 TUT.



One number for each item.

On the following pages, you will find information such as article and EAN numbers for ordering our products. You will have a clear overview of the available variants, as well as the options and configurations in which our drying cabinets can be ordered.

Drying cabinets

ECO Dryer 2.0



Interior	Door hanging	Article no.	RSK no.	E-no.	EAN no.
Bas, White	Right	65120100	8035865	9200003	733009560655
	Left	65110100	8035860	9200002	733009560654
Bas, Titanium	Right	65120200	8035869	9200009	733009560664
	Left	65110200	8035863	9200008	733009560663
Bas, Black	Right	65120300	8035870	9200011	733009560666
	Left	65110300	8035864	9200010	733009560665
Bod, White	Right	65120102	8035868	9200007	7330095606706
	Left	65110102	8035862	9200006	733009560669
Extreme, White	Right	65120101	8035866	9200005	733009560668
	Left	65110101	8035861	9200004	733009560667

Sensor Dryer



Interior	Door hanging	Article no.	RSK no.	E-no.	EAN no.
1700 Bas, White	Right	61221101	8035712	9200044	733009560763
	Left	61211101	8035711	9200043	733009560762
1700 Bas, Titanium	Right	61221201	8035714	9200046	733009560809
	Left	61211201	8035713	9200045	733009560808

Sensor Dryer cont.

Interior	Door hanging	Article no.	RSK no.	E-no.	EAN no.
1700 Bas, Black	Right	61221301	8035716	9200048	733009560813
	Left	61211301	8035715	9200047	733009560812
1900 Bas, White	Right	62221101	8035730	9200060	733009560767
	Left	62211101	8035729	9200059	733009560766
1900 Bas, Titanium	Right	62221201	8035732	9200062	733009560825
	Left	62211201	8035731	9200061	733009560824
1900 Bas, Black	Right	62221301	8035734	9200064	733009560829
	Left	62211301	8035733	9200063	733009560828
1900 Bod, White	Right	62221108	8035739	9200068	733009560883
	Left	62211108	8035738	9200067	733009560882
1900 Extreme, White	Right	62221107	8035737	9200066	733009560881
	Left	62211107	8035736	9200065	733009560880

Easy Dryer



Interior	Door hanging	Article no.	RSK no.	E-no.	EAN no.
1700 Bas, White	Right	61220101	8035706	9200038	733009560755
	Left	61210101	8035676	9200037	733009560754
1700 Bas, Titanium	Right	61220201	8035708	9200040	733009560801
	Left	61210201	8035707	9200039	733009560800
1700 Bas, Black	Right	61220301	8035710	9200042	733009560805
	Left	61210301	8045709	9200041	733009560804
1900 Bas, White	Right	62220101	8035718	9200050	733009560759
	Left	62210101	8035717	9200049	733009560758
1900 Bas, Titanium	Right	62220201	8035721	9200052	733009560817
	Left	62210201	8035720	9200051	733009560816

Easy Dryer cont.

Interior	Door hanging	Article no.	RSK no.	E-no.	EAN no.
1900 Bas, Black	Right	62220301	8035723	9200054	733009560821
	Left	62210301	8035722	9200053	733009560820
1900 Bod, White	Right	62220108	8035728	9200058	733009560859
	Left	62210108	8035726	9200057	733009560858
1900 Extreme, White	Right	62220107	8035725	9200056	733009560857
	Left	62210107	8035724	9200055	733009560856

DC 120 V



Interior	Door hanging	Article no.	RSK no.	E-no.	EAN no.
Bas, White	Double door	61910001	8035873	9200013	733009560682

DC 120 HP



Interior	Door hanging	Article no.	RSK no.	E-no.	EAN no.
Bas, White, Bottom	Double door	61920001	8035872	9200015	733009560684
Bas, White, Top	Double door	61920011	8035871	9200014	733009560685

ETS 1100



Interior	Door hanging	Article no.	RSK no.	E-no.	EAN no.
Bas, White	Reversible	60003011	8035852	9295139	733009560158

ETS 1500/1500 E



Interior	Door hanging	Article no.	RSK no.	E-no.	EAN no.
1500, Bas, White	Right	63120100	8035847	9295161	733009560420
	Left	63110100	8035846	9295156	733009560419
1500 E, Bas, White	Right	63120101	8035849	9295159	733009560422
	Left	63110101	8035848	9295158	733009560421
1500 F, White	Right	63120102	-	-	733009560557
	Left	63110102	-	-	733009560429
1500 EF, White	Right	63120103	-	-	733009560430
	Left	63110103	-	-	733009560554

Laundry benches

TB 500

T: Covered with countertop

TUT: Covered without countertop



Interior	Door hanging	Article no.	RSK no.	EAN no.
TB 500 T, White	Right	54000001	8033312	733009591038
TB 500 T, White	Left	54000002	8033313	733009591037
TB 500 T, Titanium	Right	54001001	8033315	733009591096
TB 500 T, Black	Right	54002001	8033317	733009591098
TB 500 TUT, White	Right	54010001	8033314	733009591095
TB 500 TUT, Titanium	Right	54011001	8033316	733009591097
TB 500 TUT, Black	Right	54012001	8033318	733009591099



TB 800

T: Covered with countertop

HT: Half-covered with countertop

TUT: Covered without countertop



Interior	Door hanging	Article no.	RSK no.	EAN no.
TB 800 T, White	Right	54000006	8033320	733009591101
TB 800 T, White	Left	54000005	8033319	733009591100
TB 800 T, Titanium	Right	54001006	8033325	733009591036
TB 800 T, Black	Right	54002006	8033327	733009591107
TB 800 HT, White	Right	54000004	8033324	733009591105
TB 800 HT, White	Left	54000003	8033323	733009591104
TB 800 TUT, White	Right	54010006	8033322	733009591103
TB 800 TUT, White	Left	54010005	8033321	733009591102
TB 800 TUT, Titanium	Right	54011006	8033326	733009591106
TB 800 TUT, Black	Right	54012006	8033328	733009591108

TB 1000

T: Covered with countertop



HT: Half-covered with countertop



TUT: Covered without countertop



O: Reversible fully open



OM: Reversible fully open, unassembled



Proffs: Laundry bench without cabinet



Interior	Door hanging	Article no.	RSK no.	EAN no.
TB 1000 T, White	Right	54000010	8033330	733009591042
TB 1000 T, White	Left	54000009	8033329	733009591040
TB 1000 T, Titanium	Right	54001010	8033335	733009591047
TB 1000 T, Titanium	Left	54001011	8033003	7330095911794
TB 1000 T, Black	Right	54002010	8033337	733009591049
TB 1000 T, Black	Left	54002011	8033004	7330095911800
TB 1000 HT, White	Right	54000014	8033334	733009591046
TB 1000 HT, White	Left	54000013	8033333	733009591045
TB 1000 TUT, White	Right	54010010	8033332	733009591044
TB 1000 TUT, White	Left	54010009	8033331	733009591043
TB 1000 TUT, Titanium	Right	54011010	8033336	733009591048
TB 1000 TUT, Black	Right	54012010	8033338	733009591050
TB 1000 O	Reversible	54000023	8033359	733009591122
TB 1000 OM, White	Right	54020014	8033339	733009591039
TB 1000 Proffs, White	Reversible	54000068	8033367	733009591144

TB 1200

T: Covered with countertop



HT: Half-covered with countertop



TUT: Covered without countertop



HTUT: Half-covered without countertop



TMH: Covered with shelf



O: Reversible fully open



OM: Reversible fully open, unassembled



Proffs: Laundry bench without cabinet



Interior	Door hanging	Article no.	RSK no.	EAN no.
TB 1200 T, White	Right	54000019	8033349	733009591109
TB 1200 T, Titanium	Right	54001019	8033350	733009591110
TB 1200 T, Black	Right	54002019	8033351	733009591111
TB 1200 HT, White	Right	54000022	8033341	733009591053
TB 1200 HT, White	Left	54000021	8033340	733009591052
TB 1200 HT, Titanium	Right	54001022	8033344	733009591056
TB 1200 HT, Titanium	Left	54001023	8033005	7330095911817
TB 1200 HT, Black	Right	54002022	8033345	733009591057
TB 1200 HT, Black	Left	54002023	8033006	7330095911824
TB 1200 TUT, White	Right	54010019	8033352	733009591112
TB 1200 TUT, Titanium	Right	54011019	8033353	733009591113
TB 1200 TUT, Black	Right	54012019	8033354	733009591114
TB 1200 HTUT, White	Right	54010022	8033343	733009591055
TB 1200 HTUT, White	Left	54010021	8033342	733009591054
TB 1200 HTUT, Titanium	Right	54011022	8033346	733009591058
TB 1200 HTUT, Black	Right	54012022	8033347	733009591059
TB 1200 TMH with basket/shelf, White	Right	54000065	8033001	733009591169
TB 1200 TMH with basket/shelf, White	Left	54000064	8033000	733009591168
TB 1200 O	Reversible	54000024	8033360	733009591123
TB 1200 OM, White	Right	54020022	8033348	733009591060
TB 1200 Proffs, White	Reversible	54000072	8033368	733009591145

TB 1800

HT: Half-covered with countertop

HTUT: Half-covered without countertop



Interior	Door hanging	Article no.	RSK no.	EAN no.
TB 1800 HT, White	Right	54000058	8033356	733009591119
TB 1800 HT, White	Left	54000057	8033355	733009591118
TB 1800 HTUT, White	Right	54020058	8033358	733009591121
TB 1800 HTUT, White	Left	54020057	8033357	733009591120

Laundry sinks



Laundry sink TL 40: 22 liters TL 50: 34 liters TL 60: 47 liters

Interior	Article no.	RSK no.	EAN no.
TL 40	10002500	8032161	733009502500
TL 50	10002200	8032138	733009502200
TL 60	10002100	8032112	733009502100

Built-in laundry sink TL 40: 22 liters TL 50: 34 liters TL 60: 47 liters



Interior	Article no.	RSK no.	EAN no.
TL 40 Inbyggd	10002550	8032057	7330095911763
TL 50 Inbyggd	10002800	8032120	733009502800
TL 60 Inbyggd	10002050	8032121	733009502050



Laundry sink floor stand TL 60 B: 47 liters

Interior	Article no.	RSK no.	EAN no.
TL 60 B	10002000	8032104	733009502000



Carpet laundry sink

Carpet laundry sink 105 L: 105 liters **Carpet laundry sink 220 L:** 220 liters

Interior	Article no.	RSK no.	EAN no.
Carpet laundry sink 105 L	11007100	8034111	733009507100
Carpet laundry sink 220 L	71122600	8034112	733009522601



Mangle



Mangle KM80

Interior	Article no.	RSK no.	E-no.	EAN no.
KM80, White	55001110	8035874	9200031	733009555001

Other products



Contra 1200

Interior	Article no.	RSK no.	E-no.	EAN no.
Contra 1200	61200018	8035879	9200022	733009560745



Contra 2000

Interior	Article no.	RSK no.	E-no.	EAN no.
Contra 2000	61200010	8035878	9200021	733009560744



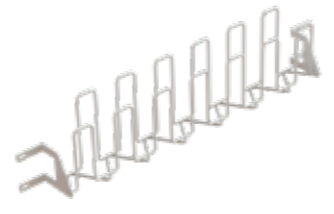
Circulation fan

Interior	Article no.	RSK no.	E-no.	EAN no.
Circulation fan	61200005	8035880	9200023	733009560924



Hygrostat

Interior	Article no.	RSK no.	E-no.	EAN no.
Hygrostat	67002160	8035886	9200031	733009591027



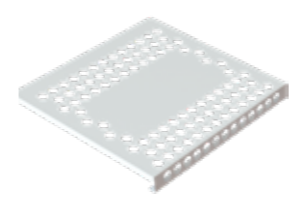
Glove hanger

Interior	Article no.	RSK no.	E-no.	EAN no.
Glove hanger, White	67001164	8035683	9205902	733009591117



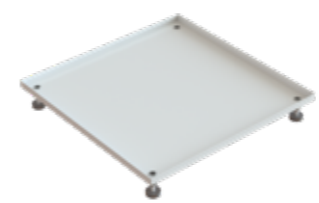
Door hanger

Interior	Article no.	RSK no.	E-no.	EAN no.
Door hanger	67000947	8035887	9200031	733009591021



Shoe rack HP

Interior	Article no.	RSK no.	E-no.	EAN no.
Shoe rack HP	67001471	8035889	9200031	733009591025



Shoe rack HP Bod

Interior	Article no.	RSK no.	E-no.	EAN no.
Shoe rack HP Bod	65100001	8035890	9200034	733009591023



Lintdrawer Lintdrawer 24: 5 kg Lintdrawer 42: 8 kg Lintdrawer 80: 9,5 kg

Interior	Article no.	RSK no.	E-no.	EAN no.
Lintdrawer 24	80918035	8034113	9209328	733009518035
Lintdrawer 42	80918037	8034114	9209330	733009518037
Lintdrawer 80	80918002	8034115	9200027	733009591028

Door TB



Interior	Door hanging	Article no.	RSK no.	EAN no.
Door TB, White R	Right	54000032	8033362	733009591125
Door TB, White L	Left	54000031	8033361	733009591124
Door TB, Titanium R	Right	54001032	8033364	733009591127
Door TB, Titanium L	Left	54001031	8033363	733009591126
Door TB, Black R	Right	54002032	8033366	733009591129
Door TB, Black L	Left	54002031	8033365	733009591128

Plinth - High & Low



Interior	Article no.	RSK no.	E-no.	EAN no.
Plinth High, White	80918048	8034117	9200036	733009591030
Plinth Low, White	80918047	8034116	9200035	733009591029

Washline



Interior	Article no.	RSK no.	E-no.	EAN no.
Washline 5 M	61200015	8035881	9200024	733009591026

Collection tray



Interior	Article no.	RSK no.	E-no.	EAN no.
Collection tray	67002165	-	-	-



School kit DC 120

Interior	Article no.	RSK no.	EAN no.
School kit DC 120	61930001	8057055	733009591024



Rails, laundry bench LB

Interior	Article no.	RSK no.	EAN no.
1 pair of rails, White	54030001	8033005	733009591161
1 pair of rails, Silver	54031001	8033006	733009591162
1 pair of rails, Black	54032001	8033007	733009591163



Wire basket

Interior	Article no.	RSK no.	EAN no.
Basket 336x494x175, Silver	54034003	8033004	733009591167
Basket 336x494x175, Black	54032003	8033008	733009591165
Basket 436x494x175, Silver	54034002	8033002	733009591166
Basket 436x494x175, Black	54032002	8033003	733009591164

Laundry bench top



Interior	Article no.	RSK no.	EAN no.
TB-top 500x600x30	57001388	8057068	733009591155
TB-top 800x600x30	57001389	8057069	733009591156
TB-top 1000x600x30	57001390	8057070	733009591157
TB-top 1200x600x30	57001391	8057071	733009591158
TB-top 1200x600x30, center	57001392	8057072	733009591159
TB-top 1800x600x30	57001393	8057073	733009591160



Drain kit, LB

Interior	Article no.	RSK no.	EAN no.
Drain kit, LB	57000524	8124312	-

NIMO

Nimoverken AB, Box 288, 542 23 Mariestad, Sweden | info@nimoverken.com | Telephone: +46 (0)506 488 00